



# Tilts



- 5" CHANNEL TILT (T5)
- 6" CHANNEL EQUIPMENT TILT (T6)
- POWERED FULL TILT (TF)
- DECKOVER TILT (T8)
- TANDEM DUAL TILT (TD)



# 5" Channel Tilt (T5)



**Lengths**  
16' & 20'

20 ft 5" Channel Tilt (T5) Pictured

## Standard Features

- 7,000 lb. G.V.W.R.
- 3,500 lb. x 2 G.A.W.R.
- 2" Ball Coupler
- Safety Chains
- 1 - Side Wind Drop-Leg Jack (8,000 lb.)
- 2 - Posi-lube Axles, Idler & Brake (3,500 lb.)
- 4 Leaf Double-eye Spring Suspension
- 4 - 15" White Spoke Wheels
- 4 - NEW ST205/75R15 Rad.Tires (1820 lb)
- Electric Breakaway Kit w/ Charger
- 9" x 72" Treadplate Aluminum Fenders
- 11 Degree Tilt Pitch
- 3 Ton Double-Action Lift Cylinder
- 5" Channel Frame & Tongue
- 3" Channel Crossmembers 24" on Center
- 2" Treated Pine Lumber Deck
- 83" Wide Deck
- 75" Wide Tilttable Deck
- Sealed Wire Harness
- Sand Blasted, Acid Washed, Powder Coated
- DOT Approved Flushmount Lights



At PJ Trailers, every trailer we build is powder coated with Sherwin-Williams™ Powder Coat. A powder coat finish is far superior to conventional paint. It is extremely durable and does not easily crack, chip, or peel as conventional paint does. Powdercoating also helps prevent rust & corrosion making it the longest lasting and most durable finish on the market.

## Coupler Options

- BP 2 5/16" Adjustable \*
- 3" Pintle Eye - Channel-mount

## Axle Options

- (2) 3,500# Electric / Spring \*
- (2) 5,200# Electric / Spring

## Tail Options

- Tilt Deck \*

## Color Options

- Black Powdercoat \*
- Equipment Yellow Powdercoat
- Grey Powdercoat
- Red Powdercoat
- Regatta Blue Powdercoat
- Teal Green Powdercoat
- Tractor Green Powdercoat
- White Powdercoat

## Other Options

- Bias Ply Tires
- 4 Flush-mount D-Rings
- Diamond Plate Fenders
- Smooth Steel Fenders
- Steel Floor w/ 4 D-Rings
- Spare Tire Mount
- No Tires & Wheels

\* denotes a standard feature



# 6" Channel Equipment Tilt (T6)



**Lengths**  
16', 20', 22'  
& 24'

**POWER UP  
& DOWN  
AVAILABLE**

20 ft 6" Channel Tilt (T6) Pictured (4' Stationary Deck + 16' Tilt)

## Standard Features

- 14,000 lb. G.V.W.R.
- 7,000 lb. x 2 G.A.W.R.
- 2 5/16" Adjustable Ball Coupler
- Safety Chains
- 1 - Drop Leg Jack (10,000 lb.)
- 2 - Posi-lube Brake Axles (7,000 lb.)
- Torsion Suspension
- 4 - 16" White Spoke Wheels
- 4 - 235/80R16 Radial Tires (3,520 lb.)
- Stake Pockets & Rubrail
- Electric Breakaway Kit w/ Charger
- 9" x 72" Treadplate Removable Steel Fenders
- 11 Degree Tilt Pitch
- 3" x 16" Cylinder
- 6" Channel Frame & Tongue
- 3" Channel Crossmembers 16" on Center
- 2" Treated Pine Lumber Deck
- 74" Wide Tilttable Deck
- 82" Between Fenders
- DOT Approved Flushmount Lifetime LED Lights
- Sealed Wire Harness
- Sand Blasted, Acid Washed, Powder Coated



At PJ Trailers, every trailer we build is powder coated with Sherwin-Williams™ Powder Coat. A powder coat finish is far superior to conventional paint. It is extremely durable and does not easily crack, chip, or peel as conventional paint does. Powdercoating also helps prevent rust & corrosion making it the longest lasting and most durable finish on the market.

### Notes:

T6 trailers over 16 ft in length will have a stationary front deck. For full length tilt see the Powered Full Tilt (TF)



Gooseneck Coupler Available



**AIR RIDE SUSPENSION AVAILABLE**

## Coupler Options

- BP 2 5/16" Adjustable \*
- Rigid mount 2-5/16 (25,000 lb.)
- GN 2 5/16" Round (30,000 lb.) w/ Toolbox
- GN Load-Leveling 2 5/16" Square (30,000 lb.) & Tbx
- 3" Pintle Eye - Channel-mount (21,000 lb.)
- GN 2 5/16" Square (30,000 lb.) w/ Toolbox
- GN 2 5/16" Round (25,000 lb.) w/ Toolbox
- GN 2 5/16" Square (25,000 lb.) w/ Toolbox

## Axle Options

- (2) 7,000# Electric / Torsion \*
- (2) 7,000# Elec/Hyd Disk / Torsion
- (3) 7,000# Electric / Torsion
- (2) 7,000# Dexter Electric / Torsion
- (2) 7,000# Load Range G 14ply Tires Electric / Torsion
- (2) 7,000# Load Range G 14ply Elec/Hyd Disk / Torsion
- (3) 7,000# Load Range G 14ply Tires Electric / Torsion

## Tail Options

- 16' Tilt Deck \*

## Color Options

- Black Powdercoat \*
- Equipment Yellow Powdercoat
- Grey Powdercoat
- Red Powdercoat
- White Powdercoat

## Other Options

- Cold Weather Wiring Harness (7-Way RV)
- Plate for Winch
- 6" Taller GN Riser
- Douglas Fir Lumber
- 9,990 G.V.W.R.
- 12"oc Crossmembers
- 1 Pair D-Rings
- Rough Oak Floor
- Weld-On Strap Ratchets (2)
- 2nd Jack (Bumper Pull)
- Power up Power down Tilt
- Mount Only for Spare Tire
- Steel Floor & 4 D-Rings
- Front Toolbox (Bumper Pull & Pintle)
- Spare Tire and Mount (Bumper Pull)
- Deck on the Neck (GN Only)
- Winch 12VDC (12,000 lb.) Incl. Front Toolbox
- 2-speed Jack (12,000 lb.)
- Roller on Front of Deck for Winch Cable

\* denotes a standard feature



# Powered Full Tilt (TF)



**Lengths**  
18' - 24'

**POWER UP  
& DOWN**

22 ft Powered Full Tilt (TF) Pictured

## Standard Features

- 14,000 lb. G.V.W.R.
- 7,000 lb. x 2 G.A.W.R.
- 2 5/16" Adjustable Ball Coupler
- Safety Chains
- 1 - Drop Leg Jack (10,000 lb.)
- 2 - Posi-lube Brake Axles (7,000 lb.)
- Torsion Suspension
- 4 - 16" White Spoke Wheels
- 4 - 235/80R16 Radial Tires (3,520 lb.)
- Stake Pockets & Rubrail
- Electric Breakaway Kit w/ Charger
- 9" x 72" Treadplate Removable Steel Fenders
- 6" Channel Frame & Tongue
- 3" Channel Crossmembers 16" on Center
- 2" Treated Pine Lumber Deck
- 74" Wide Tilttable Deck
- 82" Between Fenders
- DOT Approved Flushmount Lifetime LED Lights
- Sealed Wire Harness w/ 7-Way RV Plug
- Sand Blasted, Acid Washed, Powder Coated
- Hydraulic Power Up & Down w/ 2 3" X 16" Cylinders
- Interstate (TM) Deep Cycle Battery



At PJ Trailers, every trailer we build is powder coated with Sherwin-Williams™ Powder Coat. A powder coat finish is far superior to conventional paint. It is extremely durable and does not easily crack, chip, or peel as conventional paint does. Powdercoating also helps prevent rust & corrosion making it the longest lasting and most durable finish on the market.

### Notes:

24 ft has 8" Channel Frame  
See T6 For Gravity Tilt and Stationary Deck  
Gooseneck Coupler Available



AIR RIDE SUSPENSION AVAILABLE

## Coupler Options

- BP 2 5/16" Adjustable (14,000 lb.) \*
- Rigid mount 2-5/16 (25,000 lb.)
- GN 2 5/16" Round (30,000 lb.) w/ Toolbox
- GN Load-Leveling 2 5/16" Square (30,000 lb.) & Tbx
- 3" Pintle Eye - Channel-mount (21,000 lb.)
- GN 2 5/16" Square (30,000 lb.) w/ Toolbox
- GN 2 5/16" Round (25,000 lb.) w/ Toolbox
- GN 2 5/16" Square (25,000 lb.) w/ Toolbox

## Axle Options

- (2) 7,000# Electric / Torsion \*
- (2) 7,000# Hydraulic Drum (1000 PSI Pump) / Torsion
- (2) 7,000# Elec/Hyd Disk (1,600 PSI Pump) / Torsion
- (2) 7,000# Surge Disk / Torsion
- (2) 7,000# Surge/ Hydraulic Drum / Torsion
- (2) 7,000# Dexter Electric / Torsion
- (2) 7,000# Load Range G 14ply Tires Electric / Torsion
- (2) 7,000# Load Range G 14ply Tires Elec/Hyd Disk (1,600 PSI Pump) / Torsion

## Tail Options

Tilt Deck \*

## Color Options

- Black Powdercoat \*
- Equipment Yellow Powdercoat
- Grey Powdercoat
- Red Powdercoat
- White Powdercoat

## Other Options

- Cold Weather Wiring Harness (7-Way RV)
- Plate for Winch
- 6" Taller GN Riser
- Douglas Fir Lumber
- 9,990 G.V.W.R.
- 12"oc Crossmembers
- 1 Pair D-Rings
- Rough Oak Floor
- Weld-On Strap Ratchets (2)
- 2nd Jack (Bumper Pull)
- Mount Only for Spare Tire
- Steel Floor & 4 D-Rings
- Spare Tire and Mount (Bumper Pull)
- Deck on the Neck (GN Only)
- Winch 12VDC (12,000 lb.) Incl. Front Toolbox
- 2-speed Jack (12,000 lb.)

\* denotes a standard feature



# Deckover Tilt (T8)



**Lengths**  
22' & 26'

**POWER UP  
& DOWN**

Bumper-pull 22 ft Deckover Tilt (T8) Pictured

## Standard Features

- 14,000 lb. G.V.W.R.
- 7,000 lb. x 2 G.A.W.R.
- 2 5/16" Adjustable Ball Coupler
- Safety Chains
- 1 - Drop Leg Jack (10,000 lb.)
- 2 - Posi-lube Brake Axles (7,000 lb.)
- 6 Leaf Slipper Spring Suspension
- 4 - 16" White Spoke Wheels
- 4 - 235/80R16 Radial Tires (3,520 lb.)
- Rubrail & Stake Pockets
- Electric Breakaway Kit w/ Charger
- DOT Reflective Tape
- 8" x 10 lb. I-Beam Tongue
- 8" x 10 lb. I-Beam Main Frame
- 2 x 6 x 1/8" Square Tubing Outer Deck Frame
- 3" Channel Crossmembers 16" on Center
- 22' Tilt Portion w/ 15 Degree Tilt Pitch
- 2" Treated Pine Lumber Deck
- 96" Wide Deck
- DOT Approved Flushmount Lifetime LED Lights
- Sealed Wire Harness
- 12VDC Hydraulic Pump
- 2 - 3" x 16" Hydraulic Cylinders
- 12' Control Cable
- Sand Blasted, Acid Washed, Powder Coated

**POWDER COATED**

At PJ Trailers, every trailer we build is powder coated with Sherwin-Williams™ Powder Coat. A powder coat finish is far superior to conventional paint. It is extremely durable and does not easily crack, chip, or peel as conventional paint does. Powdercoating also helps prevent rust & corrosion making it the longest lasting and most durable finish on the market.

## Coupler Options

- BP 2 5/16" Adjustable (14,000 lb.) \*
- Rigid mount 2-5/16 (25,000 lb.)
- GN 2 5/16" Round (30,000 lb.) w/ Toolbox
- GN Load-Leveling 2 5/16" Square (30,000 lb.) & Tbx
- 3" Pintle Eye - Channel-mount (21,000 lb.)
- GN 2 5/16" Square (30,000 lb.) w/ Toolbox
- GN 2 5/16" Round (25,000 lb.) w/ Toolbox
- GN 2 5/16" Square (25,000 lb.) w/ Toolbox

## Axle Options

- (2) 7,000# Electric / Spring \*
- (2) 7,000# Electric / Torsion
- (2) 7,000# Elec/Hyd Disk / Spring
- (2) 7,000# Elec/Hyd Disk / Torsion
- (2) 7,000# Dexter Electric / Spring
- (2) 7,000# Dexter Electric / Torsion
- (2) 7,000# Load Range G 14ply Tires Electric / Spring
- (2) 8,000# Oil Bath Axles 235-80 Tires Elec / Spring
- (2) 8,000# Load Range G Tires Electric / Spring
- (2) 8,000# Load Range G Tires Elec/Hyd Disk / Spring

## Tail Options

22' Tilt \*

## Color Options

- Black Powdercoat \*
- Equipment Yellow Powdercoat
- Grey Powdercoat
- Red Powdercoat
- White Powdercoat

## Other Options

- Cold Weather Wiring Harness (7-Way RV)
- Plate for Winch
- 6" Taller GN Riser
- Douglas Fir Lumber
- 9,990 G.V.W.R.
- Battery Charger 12V
- Frame Bridge
- 12" oc Crossmembers
- 1 Pair D-Rings
- Rough Oak Floor
- Weld-On Strap Ratchets (2)
- 2nd Jack (Bumper Pull)
- Steel Floor & 4 D-Rings
- 102" Deck Width
- Spare Tire and Mount (Bumper Pull)
- Deck on the Neck (GN Only)
- Side-mount Toolbox
- Winch 12VDC (12,000 lb.) Incl. Front Toolbox
- 2-speed Jacks (12,000 lb.)
- Spare Tire & Mount (Bumper Pull) G Rated
- Roller on Front of Deck for Winch Cable

\* denotes a standard feature



26 ft Grey Gooseneck Deckover Tilt (22' Tilt + 4' Stationary Deck)



AIR RIDE SUSPENSION AVAILABLE



# Tandem Dual Tilt (TD)



**Lengths**  
24' - 40'

**POWER UP  
& DOWN**

Gooseneck 30 ft Tandem Dual Tilt (TD) Pictured

## Standard Features

- 22,400 lb. G.V.W.R.
- 10,000 lb. x 2 G.A.W.R
- 2 5/16" Gooseneck Ball Coupler (25,000 lb.)
- Safety Chains
- 2 - Dropleg Jacks (10,000 lb.)
- 2 - Oil Bath Axles (10,000 lb.)
- Torsion Suspension
- 8 - 16" Grey Dual Wheels w/ 8 on 6.5" Bolt Pattern
- 8 - 16" 235/80R16 Radial Tires (3,090 lb.)
- Rubrail & Stake Pockets
- Electric Breakaway Kit w/ Charger
- DOT Reflective Tape
- Side Steps on Both Sides
- Front Toolbox (GN Only)
- Self-rising Bumper
- 24' Tilt Portion w/ 15 Degree Tilt Pitch
- 12VDC Hydraulic Pump
- Scissor Lift
- 12" x 19 lb. I-Beam Frame, Riser & Neck
- 8" x 15 lb. I-lb. Deck Frame
- 3" Channel Crossmembers 16" on Center
- 2 x 6 x 1/8" Square Tubing Outer Deck Frame
- Frame Bridging
- 2" Treated Pine Lumber Deck
- 102" Wide Deck
- DOT Flushmount Lifetime LED Lights
- Sealed Wire Harness
- Sand Blasted, Acid Washed, Powder Coated



At PJ Trailers, every trailer we build is powder coated with Sherwin-Williams™ Powder Coat. A powder coat finish is far superior to conventional paint. It is extremely durable and does not easily crack, chip, or peel as conventional paint does. Powdercoating also helps prevent rust & corrosion making it the longest lasting and most durable finish on the market.



AIR RIDE SUSPENSION AVAILABLE

## Coupler Options

- GN 2 5/16" Round (25,000 lb.) \*
- GN 2 5/16" Round (30,000 lb.)
- GN Load-Leveling 2 5/16" Square (30,000 lb.)
- 3" Pintle Eye - Face-mount (36,000 lb.)
- GN 2 5/16" Square (30,000 lb.)
- GN 2 5/16" Square (25,000 lb.)

## Axle Options

- (2) 10,000# Elec / Spring
- (2) 10,000# Elec / Torsion \*
- (2) 10,000# Elec/Spring w/ Single 17.5 Tires Elec / Spring
- (2) 10,000# Elec/Spring w/ Single 17.5 Tires Elec / Torsion
- (2) 12,000# Elec / Spring
- (2) 12,000# Elec/Hyd Disk / Spring

## Tail Options

- 24' Tilt Deck \*

## Color Options

- Black Powdercoat \*
- Equipment Yellow Powdercoat
- Grey Powdercoat
- Red Powdercoat
- White Powdercoat

## Other Options

- Cold Weather Wiring Harness (7-Way RV)
- AL-KO Axles 10k Electric/Spring only <sup>2</sup>
- Dexter Axles 10k Electric/Spring only <sup>2</sup>
- Plate for Winch
- 6" Taller GN Riser
- Douglas Fir Lumber
- Battery Charger 12V
- 12" oc Crossmembers
- 1 Pair D-Rings
- Rough Oak Floor
- Weld-On Strap Ratchets (2)
- Hydraulic Jacks (12,000 lb.) Incl. Front Toolbox <sup>2</sup>
- Goodyear G Rated Tires
- 4" Ratchets every 4ft w/ Slide Track
- 6" Axle Spread (Longer Equalizer)
- Front Toolbox (PH Only)
- Deck on the Neck 8x8 ft
- Side-mount Toolbox
- Winch 12VDC (12,000 lb.) Incl. Front Toolbox
- 2-speed Jacks (12,000 lb.)
- HD Semi Trailer 2x Jacks (25,000 lb.) No Frt T/box
- Roller on Front of Deck for Winch Cable

\* denotes a standard feature

# Tilts Options Guide (some options not shown, please view the product page for a list of all options)

## Coupler Options



Bumper Pull



3" Pintle Eye



8" I-Beam Gooseneck

## Color Options



Black  
Powder  
Coat



Eq. Yellow  
Powder  
Coat



Grey  
Powder  
Coat



White  
Powder  
Coat



Red  
Powder  
Coat

*(actual color may vary)*

## Other Options



Rough Oak Floor



Rubrail



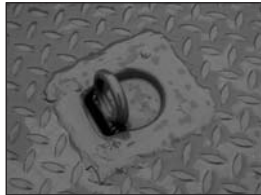
Winch 12VDC (12,000 lb.)



Deck on the Neck (GN Only)



Spare Tire Mount



Steel Floor & 4 D-Rings



1 Pair D-Rings



Winch Cable Roller



12"oc Crossmembers



Sliding Strap Ratchets



Weld On Strap Ratchets (2)



Side-Mount Toolbox



2 Speed Jacks



**TRAILER FLEX** TrailerFlex Air Ride  
Suspension



## About PJ Trailers

Established in 1991, PJ Trailers has become the premier open trailer manufacturer in North America. The PJ Trailer brand is synonymous with high-end, superbly constructed trailers. We feature standard powder coating on every trailer we build.

Visit Us Online at [www.pjtrailers.com](http://www.pjtrailers.com)